

O Church, Arise

with In Christ Alone

Words and Music by
KEITH GETTY
and STUART TOWNEND
Arranged by Dave Williamson

Militaristically ♩ = 70

58

N.C. JESUS: "I am the vine; ..."
(Snare)

mp
(Timpani)

(perc. cont.)

legato

"... For you will ..."

© Copyright 2005 Thankyou Music (PRS) (admin. worldwide by EMI CMG Publishing
excluding Europe, which is admin. by kingswaysongs.com)
All rights reserved. Used by permission.

Possession of a CCLI license does not grant permission to make copies of this piece of music.
For clarification of the rights CCLI grants, please call 1-800-234-2446.

"...ends of the earth."

13 **(59)** $D\flat$ $D\flat(\text{no3})$ $G\flat$ $D\flat(\text{no3})$ $A\flat$ $D\flat(\text{no3})$

16 *WOMEN: unison*
mp

1. O Church, a - rise and put your ar - mor on; hear the

$D\flat$ $A\flat$ $E\flat$

19

call of Christ our cap - tain. For now the weak can say that

$G\flat$ $A\flat$ $D\flat$

22 **(60)**

they are strong in the strength that God has giv - en. With shield of

MEN: unison mp

$A\flat$ $E\flat$ $G\flat$ $A\flat$ $D\flat$

25

faith and belt of truth we'll stand a - gainst the dev - il's

Chords: G \flat , A \flat , G \flat /B \flat

This system contains measures 25, 26, and 27. It features a vocal line with lyrics, a bass line, and a piano accompaniment. The key signature has four flats. Chords G \flat , A \flat , and G \flat /B \flat are indicated above the piano part.

28

lies. An ar - my bold whose bat - tle cry is "Love," reach - ing

unison

Chords: A \flat /C, D \flat , A \flat sus

This system contains measures 28, 29, and 30. The vocal line continues with the lyrics. The piano part includes a unison section. Chords A \flat /C, D \flat , and A \flat sus are indicated above the piano part.

31

out to those in dark - ness.

Chords: G \flat , A \flat , D \flat , B \flat m9

This system contains measures 31, 32, and 33. The vocal line concludes with the lyrics. The piano part features a B \flat m9 chord in measure 33. Chords G \flat , A \flat , D \flat , and B \flat m9 are indicated above the piano part.

34 61 *mf*

2. Our call to war, to love the

Chords: Ebm9, Gb Ab, Db(no3)

mf

37

cap - tive soul, but to rage a-against the cap - tor. And with the

Chords: Absus, Ab, Gb2, Absus, Db(no3), Gb Db

40

sword The sword that makes the wound - ed whole we will
wound - ed whole

Chords: Db, Absus, Ab

42

62

fight with faith and val - or. When faced with trials on ev-'ry

Chords: G \flat , Absus, D \flat , G \flat

45

unison

side we know the out - come is *sick* se - cure; and Christ will

Chords: A \flat , G \flat /B \flat , A \flat /C, G \flat /A \flat

48

63

have the prize for which He died an in - her - i - tance of na -

Chords: D \flat , Absus, A \flat , G \flat , Absus

51 *ff*

tions. Hal - le - lu - jah! Hal -

ff

Db Ab Ebm7

54

le - lu - jah! Hal - le - lu -

Ab Db Ab

57 64

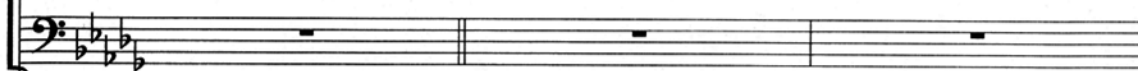
jah! Hal - le - lu - jah!

Ebm7 Ab Db

60

mp unison

3. Come, see the cross where love and mer - cy meet, as the



mp (Woodwind cues)

63

mfSon of God is strick - en. Then see His foes
unison His foes lie crushed be -

mf

66

65

neath His feet, { for the Con-quer-or has ris - en! And as the
neath His feet,

69

stone is rolled a - way, and Christ e - merg-es from the—

f

G \flat A \flat G \flat B \flat

72

unison

grave. This vic - t'ry march con - tin - ues 'til the day ev - 'ry

unison

A \flat C G \flat A \flat D \flat A \flat sus A \flat

75

eye and heart shall see— Him.

G \flat A \flat sus D \flat Fm2

66

78

mf

4. So Spir - it, come, put strength in

Bbm7 Ebm7 Gb Ab D

mf

81

ev - 'ry stride, give grace for ev - 'ry hur - dle; that we may

Asus G A D G/D

84

run with faith to win the prize of a ser - vant good and faith -

D Asus G A

67

87 *f*

ful. As saints of old still line the way, re - tell - ing

D G A

f

90 *unison*

tri - umphs of His — grace, we hear their calls and hun - ger

unison

G/B A/C# G/A D(no3) D/F#

93

for the day when, with Christ, we stand in glo - ry.

Asus G2(no3) A Asus Dunis.

96 68 *IN CHRIST ALONE* (Getty/Townend) *unison*

No guilt in *unison*

cresc.

99 *ff*

life, no fear in death, this is the pow'r of Christ in

ff

102

me; From life's first cry to fi - nal breath, Je - sus com -

105 69

mands my des - tin - y. No pow'r of hell, no scheme of

C $\frac{G}{B}$ Am7 D7 G C $\frac{G}{B}$

108

man can ev - er pluck me from His hand; 'Til He re-

D $\frac{G}{B}$ C $\frac{G}{B}$ C D $\frac{C}{D}$

111 70

turns or calls me home here in the pow'r of Christ I'll (I'll)

G C D Em7 C $\frac{G}{B}$ Am7 D7

114

stand. No pow'r of hell, no scheme of man can ev - er

G Fmaj7 Em7 $\frac{C2}{E}$ Em7

117

pluck me from His hand; Till He re -

Am7 G(add2) Cmaj7 $\frac{C}{D}$

119

turns or calls me home here in the

G C D Em7

121 71

pow'r of Christ I'll (I'll) stand. Here in the

C $\frac{G}{B}$ Am7 D G Em7

123

pow'r of Christ I'll (I'll) stand. Here in the pow'r of Christ

unison

unison

C $\frac{G}{B}$ Am7 D Em Em7 C $\frac{A}{C\#}$

126

I'll stand,

$\frac{C}{D}$ D $\frac{C}{D}$ Eb $\frac{Eb}{D}$

129

Handwritten: *BB*

I'll stand,

Cm7 Am7 D A Ebmaj7 D G (String cues) (Timpani cues)

132

D G G Eb G

rit.

134

I'll stand!

rit.